

CERTIFIED LAND CORNER RECORDATION

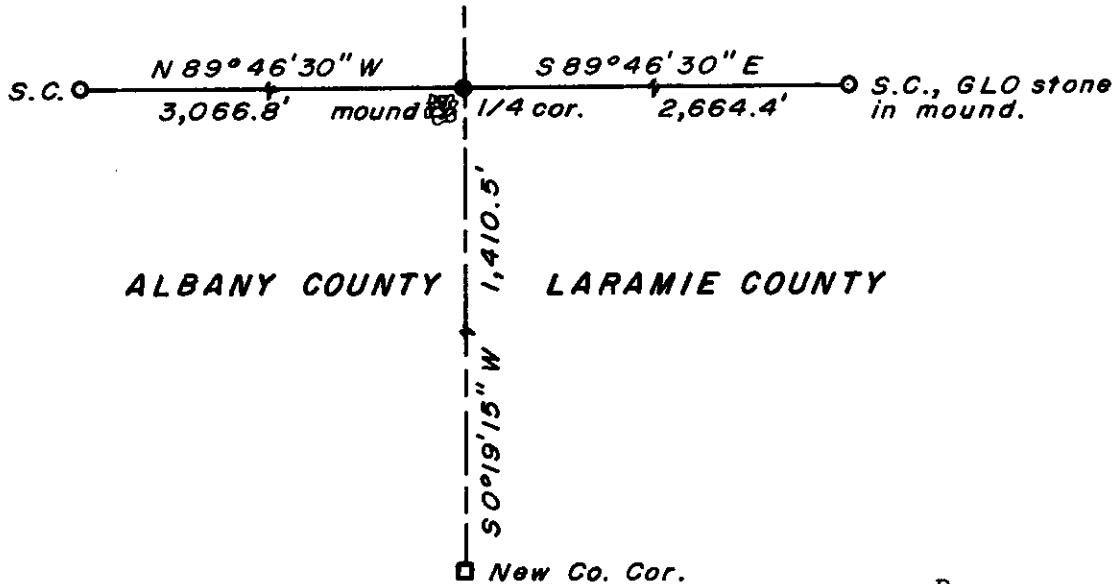
DESCRIPTION OF CORNER EVIDENCE FOUND, AND ORIGINAL RECORD (If known)

LOCATION No evidence of corner or corner monument found, corner re-established by proportionate measurement.
 $\frac{1}{4}$ S.18
 $\frac{1}{4}$ S.19
 T.12N., R.70W.
 6th P.M. G.L.O. record - Sandstone 16 x 10 x 6 marked $\frac{1}{4}$ on N. Side [Fowler and Fahringer, contract survey, 1874]

DESCRIPTION OF MONUMENT AND ACCESSORIES ESTABLISHED TO PERPETUATE THE ORIGINAL LOCATION OF THIS CORNER:

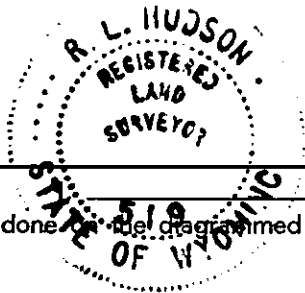
At the corner: Set a $\frac{1}{2}$ " dia. x 30" long (concrete-filled) iron pipe with brass cap.
 Accessories: Raised a rock mound, 2 feet SW of corner monument.

SKETCH, WITH COURSE AND DISTANCE TO ADJACENT CORNER IF DETERMINED IN THIS SURVEY.
 (May Sketch or Paste Reproduction on Reverse Side.)



Brass cap set 6" above ground.

Brass cap stamped:
 T.12N. R.70W.
 $\frac{1}{4}$ S.18
 $\frac{1}{4}$ S.19
 LS 519 1975



R.L. Hudson certify that I have carefully performed or reviewed the work done on the diagrammed corner as reported on this recordation form and approve the same.

R.L. Hudson Wyoming L.S. No. 519
 Signature of Surveyor Registration No.

STATE OF WYOMING,
 Office of Clerk and Recorder,
 County of Laramie

This "corner record" was filed for record on the 29 day of December, 1975, was noted on the cross-index plat and is assigned page No. 4, in book No. filed.

Janet C. Whitehead
 County Official

Cross Index No. <u>N-3</u>	T. <u>12</u>	R. <u>70</u>	Mer.
_____	T. _____	R. _____	Mer.
_____	T. _____	R. _____	Mer.
_____	T. _____	R. _____	Mer.
_____	T. _____	R. _____	Mer.
_____	T. _____	R. _____	Mer.
_____	T. _____	R. _____	Mer.



The State of Wyoming }
County of Laramie } SS

This instrument was filed for record
at 2 44 o'clock P M on the
29th day of Dec
A. D. 19 75 and duly recorded in
book — on page 2914.

James C. Whithead

County Clerk & Ex-Officio Register of Deeds

By..... Deputy

Photographed

Indexed HP

Filed

Assessor